

## ECWP100S/ECWP100C

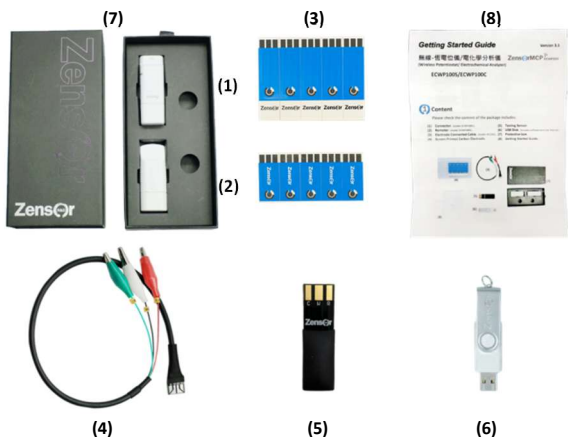
Note:

This getting started guide is for a quick start, for more detailed information, operational issues, or problems, please refer to the file **"Read me"** or **User Manual** in the USB Disk.

### 1 Contents

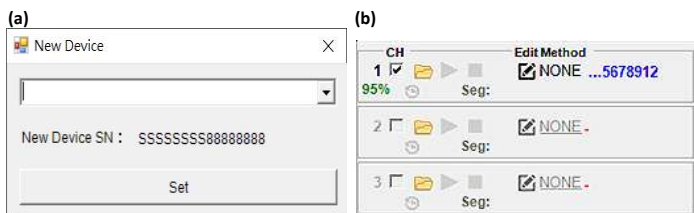
Please check the contents of the package include:

- (1) Connector. (model: ECWP100C).
- (2) Remoter. (model: ECWP100S).
- (3) Screen-Printed Carbon Electrodes.
- (4) Electrode Connecting cable. (model: ECC101).
- (5) Testing Sensor.
- (6) USB Disk. (includes software and user manual).
- (7) Protective Box.
- (8) Getting Started Guide.

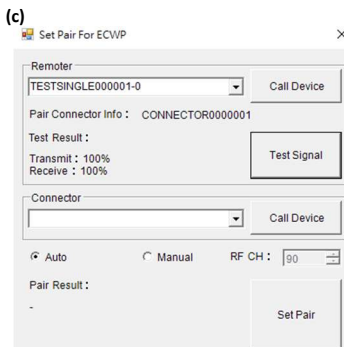


### 2 Installation

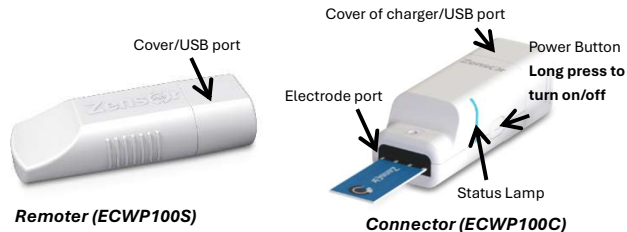
- Step 1.** Copy "ZensorP\_Setup" to your computer from the USB disk and run.
- Step 2.** Run the software "ZensorP" and import "ECWP100 license" also from the USB disk.
- Step 3.** Insert the **Remoter** (ECWP100S) to USB port, and define the channel as below (a).
- Step 4.** Press the power button on **Connector** (ECWP100C).
- Step 5.** Wait until the blue lamp of the **Connector** stays on.
- Step 6.** When the **Connector's** status is shown as (b), it is ready to use.



Note:  
Remoter and Connector had been paired before shipment. If you have more than one connectors or can't link as the previous steps, please do the following:  
Click **Setup** → select **Pair connector**, the window will pop up as in (c).



### 3 Device appearance of ECWP100S/ ECWP100C

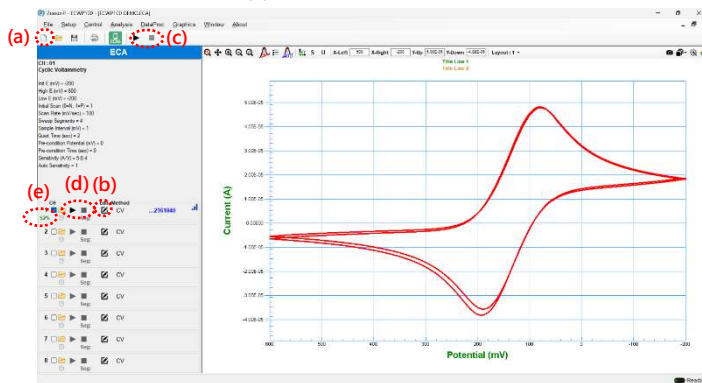


Device status is indicated by the lamp:

Status	Color of Lamp	Red (R)	Purple (P)	Blue (B)
Fast flashing --- Unlinked				
Lighting --- Linked		Low Power	Charging	Normal Power
Slow flashing --- Running		< 25 %		>= 25 %

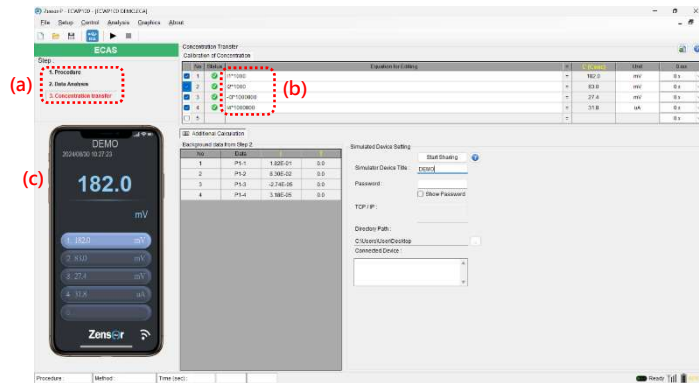
### 4 ECA Mode

You can run the electrochemical experiments in **ECA mode**, as in the picture below. Click (a) to create a new file. Click (b) to set up the method and parameters for your experiment. Click (c) or (d) to run/stop your experiment. The status of the battery in ECWP100C is shown at (e).



### 5 ECAS Mode

You can also program your wireless sensor system in **ECAS mode** by select this icon (📱) on the top of the software. There are three steps in this mode:  
**Step 1. Procedure**, **Step 2. Data Analysis**, **Step 3. Concentration transfer**, as (a). You can use our software to automatically extract values from your experiments, or calculate concentration, for example, by typing in formulae at (b). The results will be shown as (c). It can also be shown on your mobile device via Wi-Fi sharing.



### 6 Download the App as a Simulator

You can search for "Zensor" or "ECWP" to download the App from your phone store to present your experimental data and concentration. The QR codes below are also available. For more details, please refer to User Manual in the USB disk.

